

Artillery Mansions Victoria Street London, SW1H 0HZ

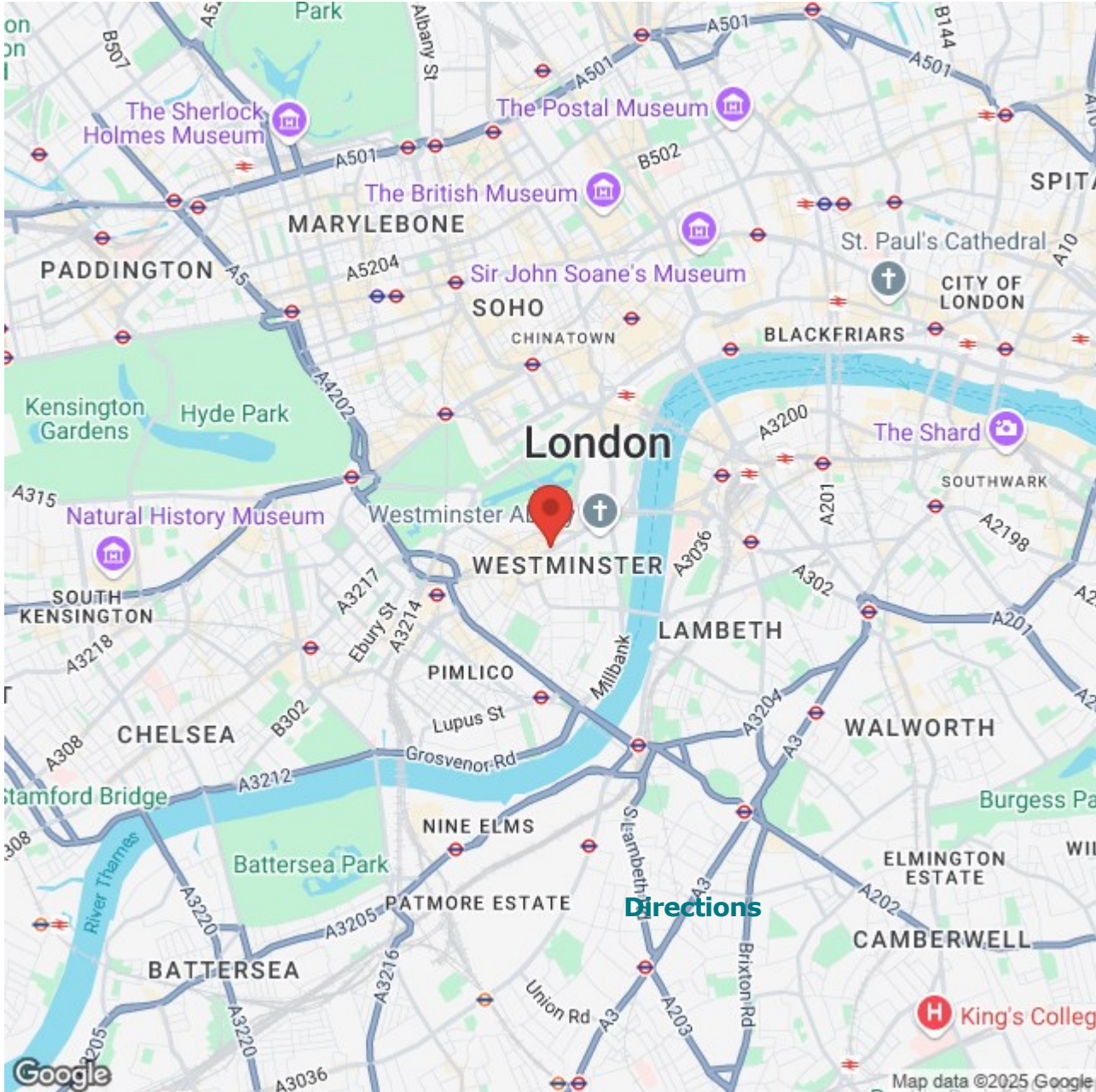
Artillery Mansions is consistently referred to as being amongst the very best quality residential buildings to be found in Westminster. High ceilings, 24 hour portage and the courtyard gardens add to the charm and feel. This large and bright studio space is the perfect London home. St James Park and underground are 2 minutes walk away whilst the many shopping, restaurant and transport facilities of Victoria Street are on your doorstep.

980 years unexpired.

£575,000

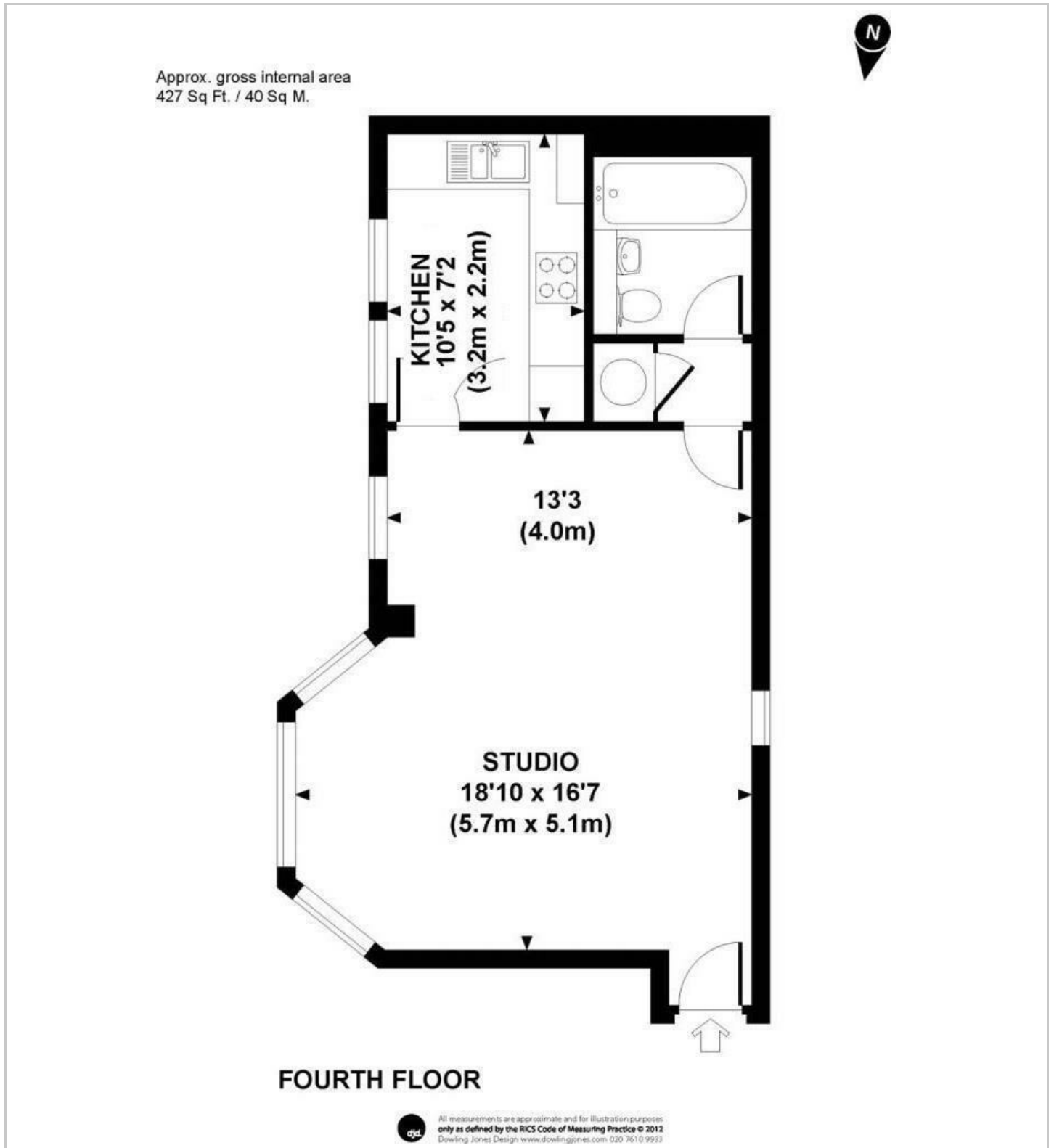
Artillery Mansions Victoria Street

London, SW1H 0HZ





Floor Plan



These particulars, whilst believed to be accurate are set out as a general outline only for guidance and do not constitute any part of an offer or contract. Intending purchasers should not rely on them as statements of representation of fact, but must satisfy themselves by inspection or otherwise as to their accuracy. No person in this firm's employment has the authority to make or give any representation or warranty in respect of the property.

