



Jessel House Page Street

London, SW1P 4BH

This excellent studio flat is on the second floor of this solid red brick building built in 1903. With very reasonable service charges it represents the perfect pied a terre or first home. The common parts are recently refurbished and the flat is light, bright and quiet. These flats are known for their location and their value for money.

The Tate gallery, Parliament, Victoria Street and St James Park are all a short walk away.

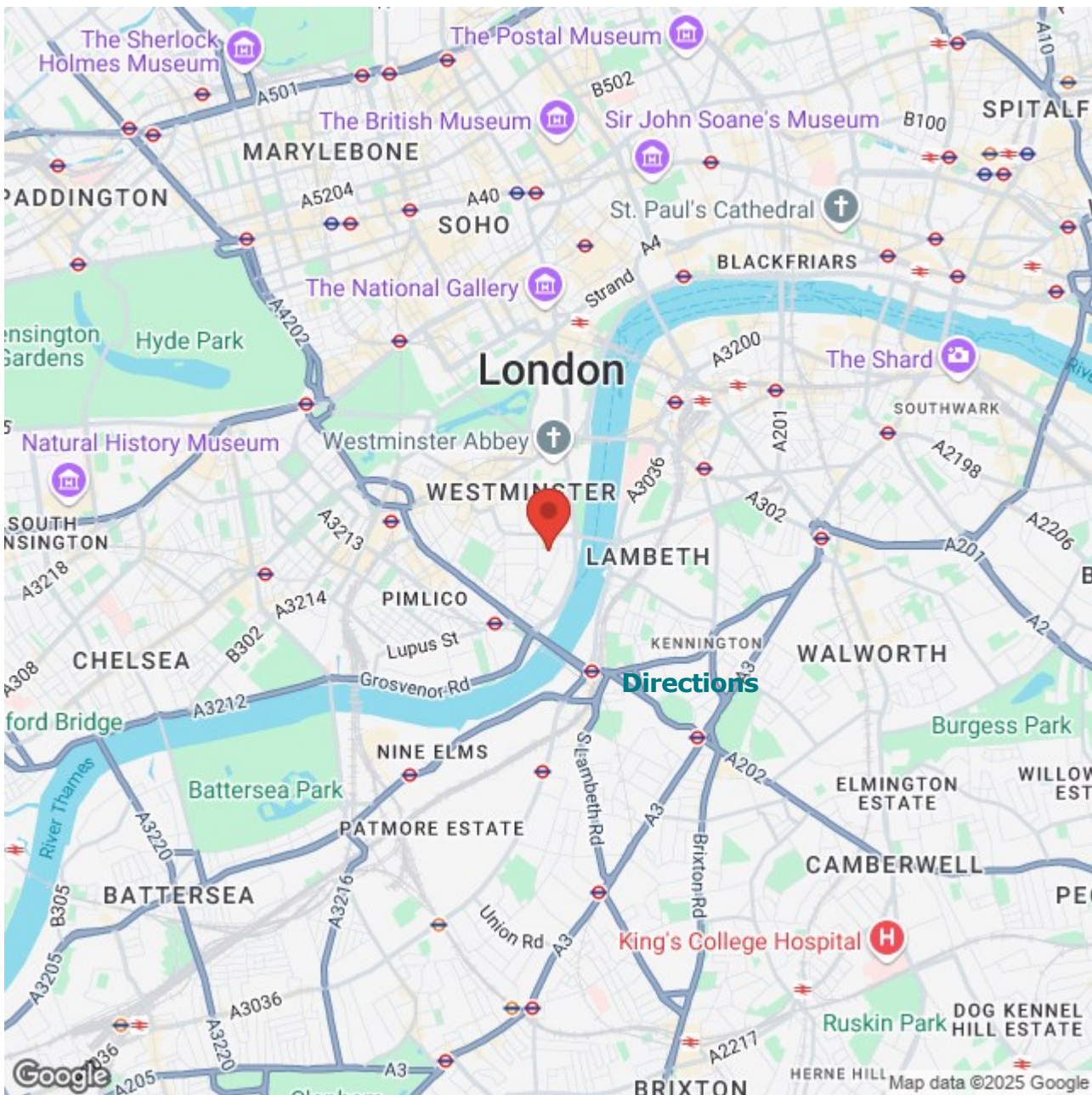
£330,000

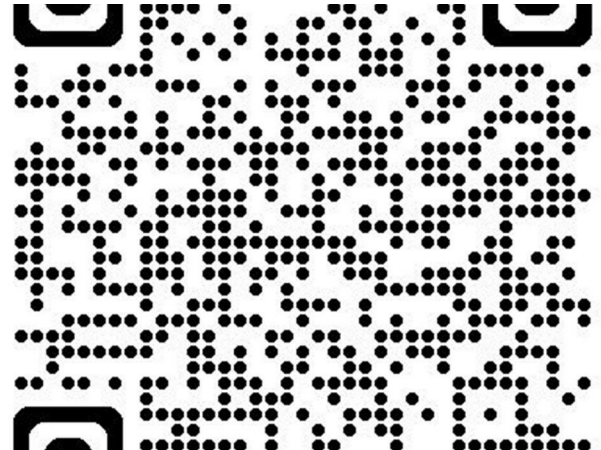
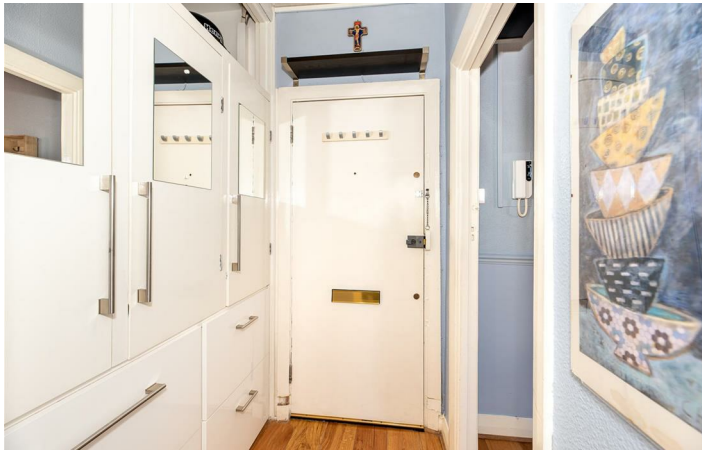
Jessel House Page Street

London, SW1P 4BH

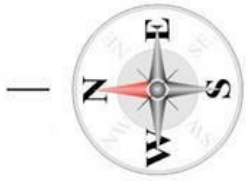


- Bright studio room
- Good storage space
- Excellent value for money
- Close to Victoria Street shopping
- Open plan kitchen
- Reasonable service charges
- Near St James Park and Pimlico underground
- Shower room
- Red brick solid block
- Smart common parts





Floor Plan



STUDIO FLAT

SW1P

Total gross internal area:
275.4 sq. ft. | 25.58 sq. m.
(approximate)



SECOND FLOOR

Disclaimer: This floor plan is for illustrative purposes only. Whilst every attempt has been made in accordance with RISC Property Measurement Standards to ensure the accuracy of the plan contained here, measurements of doors, windows, fixtures and any other items are approximate. All measurements for the individual area lengths and widths are maximum, metered at the widest points. Due to rounding, numbers may not add up precisely. Plots and gardens are illustrative only and excluded from all area calculations. The services, systems and appliances shown have not been tested and no guarantee to their working order can be given.

Copyright © 2022 JJsnap.co.uk All rights reserved.

These particulars, whilst believed to be accurate are set out as a general outline only for guidance and do not constitute any part of an offer or contract. Intending purchasers should not rely on them as statements of representation of fact, but must satisfy themselves by inspection or otherwise as to their accuracy. No person in this firm's employment has the authority to make or give any representation or warranty in respect of the property.

