

50 Westminster Palace Gardens, Artillery Row , London, SW1P 1RL £620,000

Set in an elegant recently refurbished block that has undergone a programme of major works which has brought Westminster Palace Gardens back to its former glory.

Situated in Artillery Row, the location is ideal for ease of access to St James' Park underground station and Victoria mainline and underground stations which provide access to the City and the West End, plus Gatwick and Heathrow International Airports

Available with tenant in place offering a long term rental income or with vacant possession with the agreement of the tenant

Share of freehold

Current service charge c.£2450 (six month period)

- 538 square feet
- high ceilings
- mansion block
- share of freehold
- lift
- porter

Viewing

Please contact us on if you wish to arrange a viewing appointment for this property or require further information.



1



1



1



D

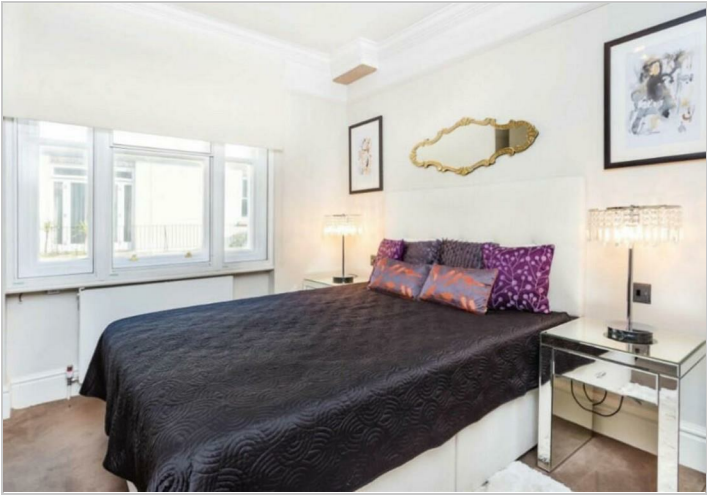
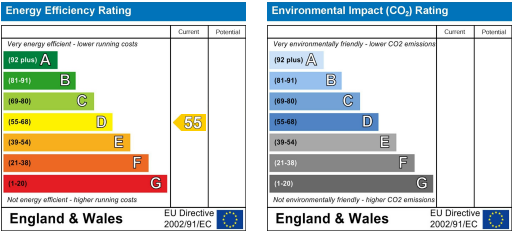
Floor Plan



Area Map



Energy Efficiency Graph



These particulars, whilst believed to be accurate are set out as a general outline only for guidance and do not constitute any part of an offer or contract. Intending purchasers should not rely on them as statements of representation of fact, but must satisfy themselves by inspection or otherwise as to their accuracy. No person in this firms employment has the authority to make or give any representation or warranty in respect of the property.