



## Cumberland Court Cumberland Street

Pimlico, London, SW1V 4LR

£375,000

A delightful bright and quiet studio flat on the first floor of this well located Pimlico block lying between Victoria and Sloane Square stations. The long lease and low service charges make this flat the ideal London apartment to use as a pied a terre, first home or rental investment. Decorated to a good standard throughout and with plentiful storage means this flat is ready to walk straight into.

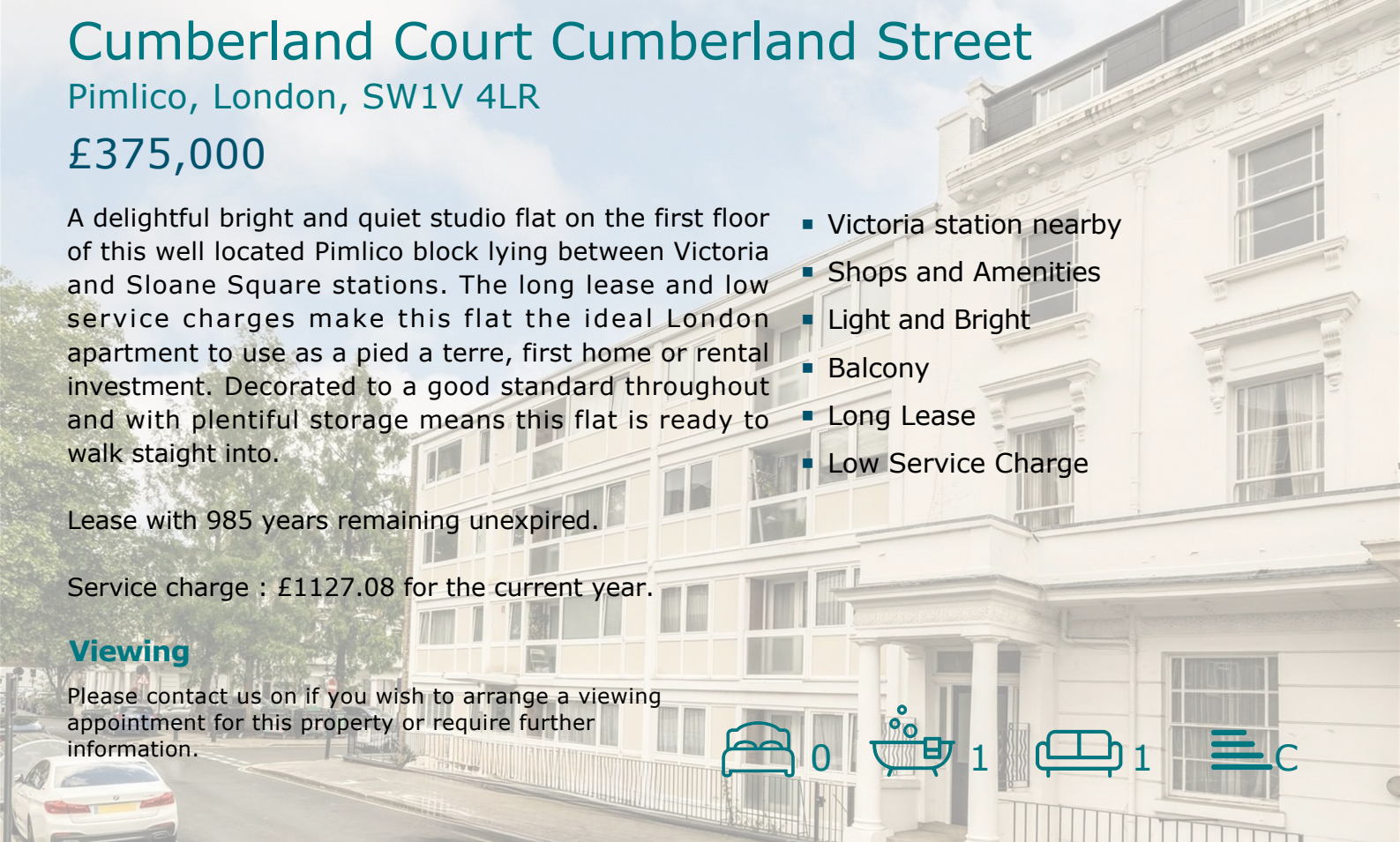
- Victoria station nearby
- Shops and Amenities
- Light and Bright
- Balcony
- Long Lease
- Low Service Charge

Lease with 985 years remaining unexpired.

Service charge : £1127.08 for the current year.

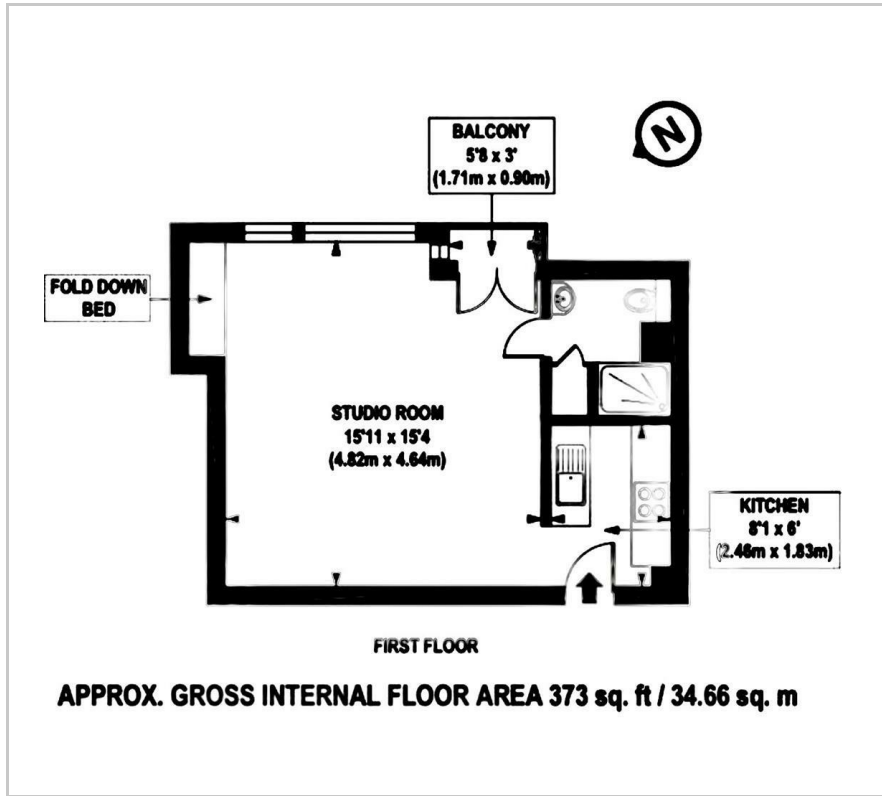
### Viewing

Please contact us on if you wish to arrange a viewing appointment for this property or require further information.





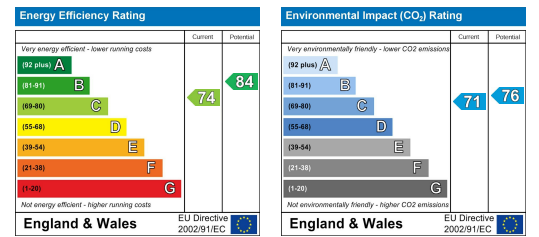
## Floor Plan



## Area Map



## Energy Efficiency Graph



These particulars, whilst believed to be accurate are set out as a general outline only for guidance and do not constitute any part of an offer or contract. Intending purchasers should not rely on them as statements of representation of fact, but must satisfy themselves by inspection or otherwise as to their accuracy. No person in this firm's employment has the authority to make or give any representation or warranty in respect of the property.