

Lesley Court 23-33 Strutton Ground London, SW1P 2HZ

This two bedroom apartment located in the heart of Westminster is just a stone's throw from St James Park. Covering some 700 square feet, the property features two well-proportioned double bedrooms, a bright reception room with open plan kitchen and a bathroom. The property also benefits from a spacious outdoor patio to the front.

The location is excellent, with Westminster Cathedral, Tate Britain and Strutton Ground market closeby . Additionally, Victoria Street offers many shops, restaurants and other amenities.

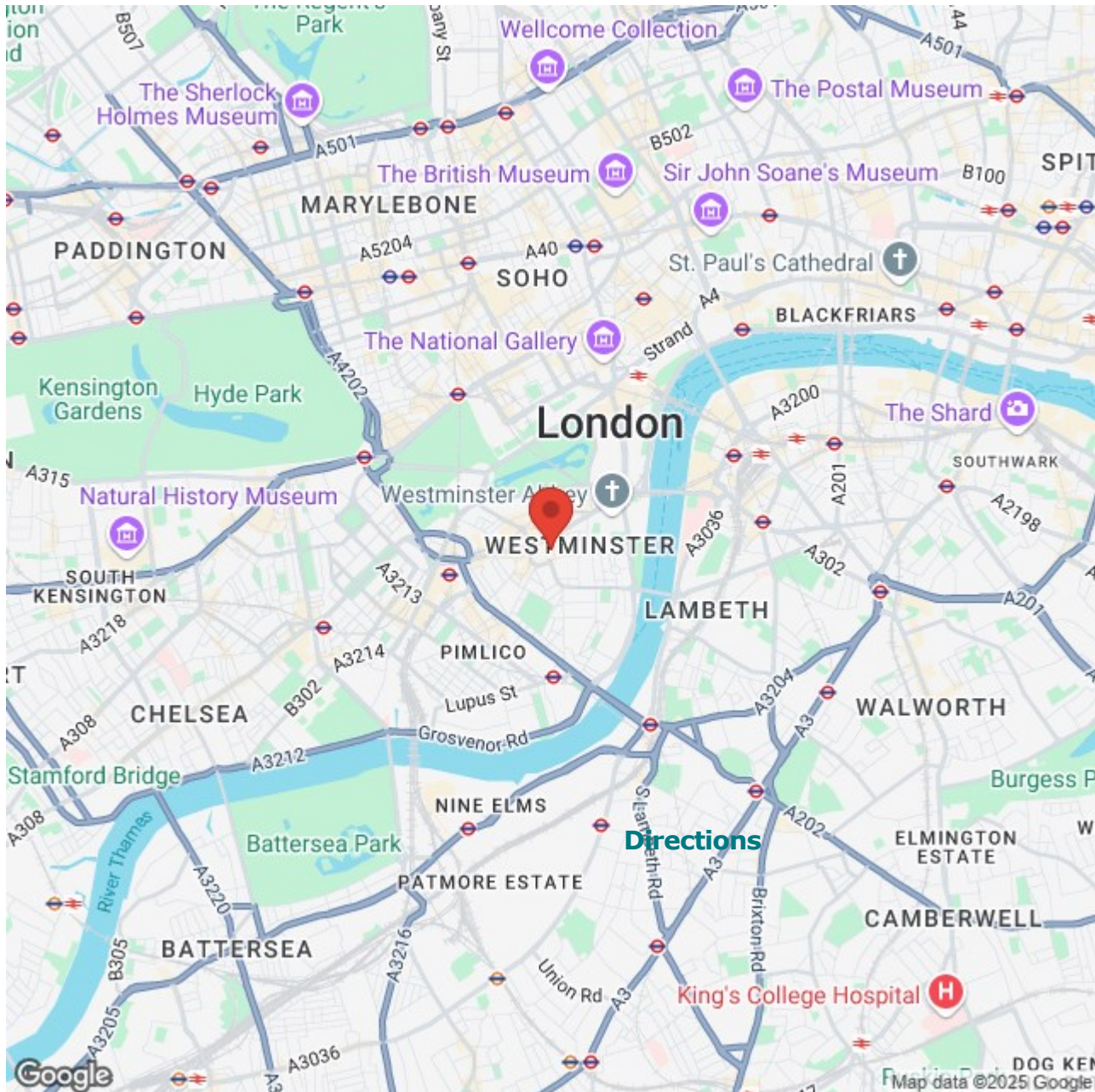
£650 Per week

Lesley Court 23-33 Strutton Ground

London, SW1P 2HZ



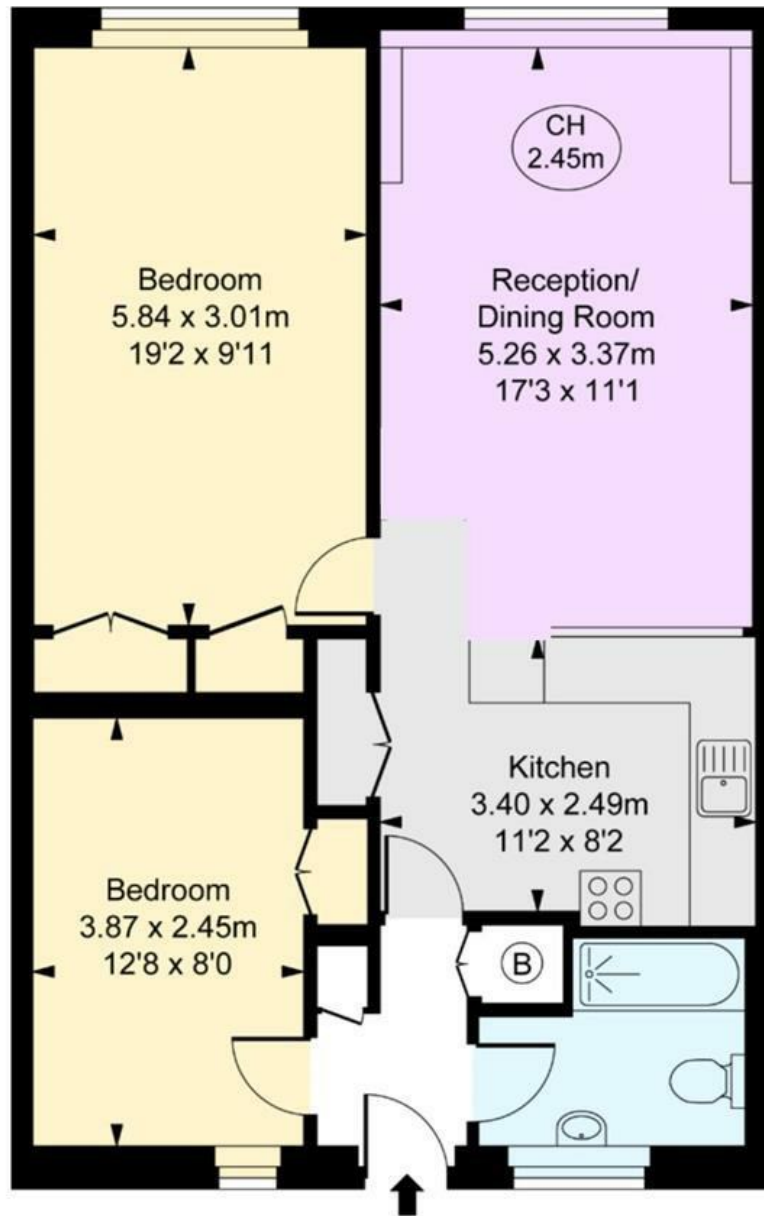
- Parking space available by arrangement





Floor Plan

Lesley Court, SW1P
 Approximate Gross Internal Area
 64.76 sq m / 697 sq ft
 (CH = Ceiling Heights)



These particulars, whilst believed to be accurate are set out as a general outline only for guidance and do not constitute any part of an offer or contract. Intending purchasers should not rely on them as statements of representation of fact, but must satisfy themselves by inspection or otherwise as to their accuracy. No person in this firm's employment has the authority to make or give any representation or warranty in respect of the property.

Energy Efficiency Rating		Environmental Impact (CO ₂) Rating	
Current	Potential	Current	Potential
63	70	69	70
England & Wales		England & Wales	
EU Directive 2002/91/EC		EU Directive 2002/91/EC	