



## 77 Warwick Square

, London, SW1V 2AR

£600,000

New to the market one-bedroom apartment in the vibrant neighbourhood of Pimlico. Offering the charming residence, features contemporary decor and beautiful wood floors. Situated on the raised ground floor of a lovely stucco-fronted period building, it perfectly blends modern living with classic elegance. Conveniently located between Pimlico and Victoria stations.

- Double Bedroom
- Modern bathroom
- Reception room
- Kitchen
- EPC rating D
- Close to Pimlico and Victoria Stations
- Close to Pimlico Market
- Shops and restaurants closeby on Victoria Street
- Close to St James Park
- Close to Parliament

### Viewing

Please contact us on if you wish to arrange a viewing appointment for this property or require further information.



1



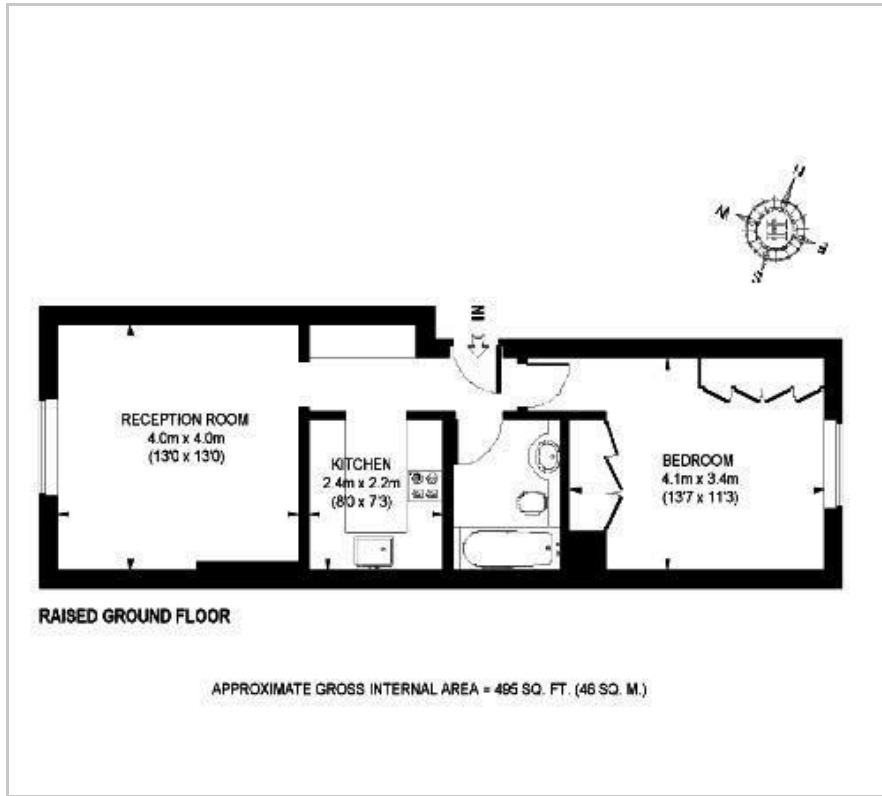
1



1



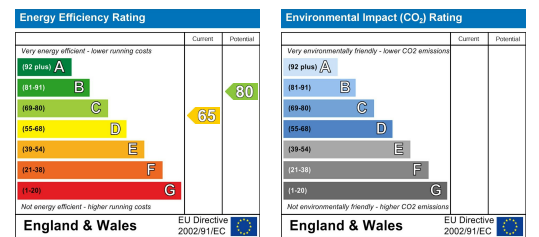
## Floor Plan



## Area Map



## Energy Efficiency Graph



These particulars, whilst believed to be accurate are set out as a general outline only for guidance and do not constitute any part of an offer or contract. Intending purchasers should not rely on them as statements of representation of fact, but must satisfy themselves by inspection or otherwise as to their accuracy. No person in this firm's employment has the authority to make or give any representation or warranty in respect of the property.