



Flat 42, Westminster Mansions

, London, SW1

Offers in the region of £550,000

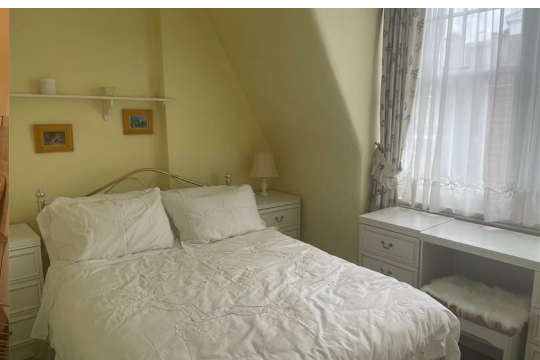


A charming and bright top floor one bedroom flat in this sought after building close to the Houses of Parliament. This is a well proportioned double bedroom apartment set on the fourth (top) floor of a prestigious Westminster mansion block, the property benefits from built-in storage, a bright reception room, separate kitchen, principal bedroom and bathroom. There are windows in all of the rooms including the bathroom and kitchen.

Westminster Mansions is an imposing mansion block in the heart of Westminster, to the south of St James's Park and east of Victoria. The area includes some of London's most iconic landmarks, yet retains a calm and surprisingly relaxed atmosphere. The property is within reach of the many amenities, restaurants and shops of Victoria, Westminster and St James's.

979 years remaining unexpired plus a share in the Freehold.

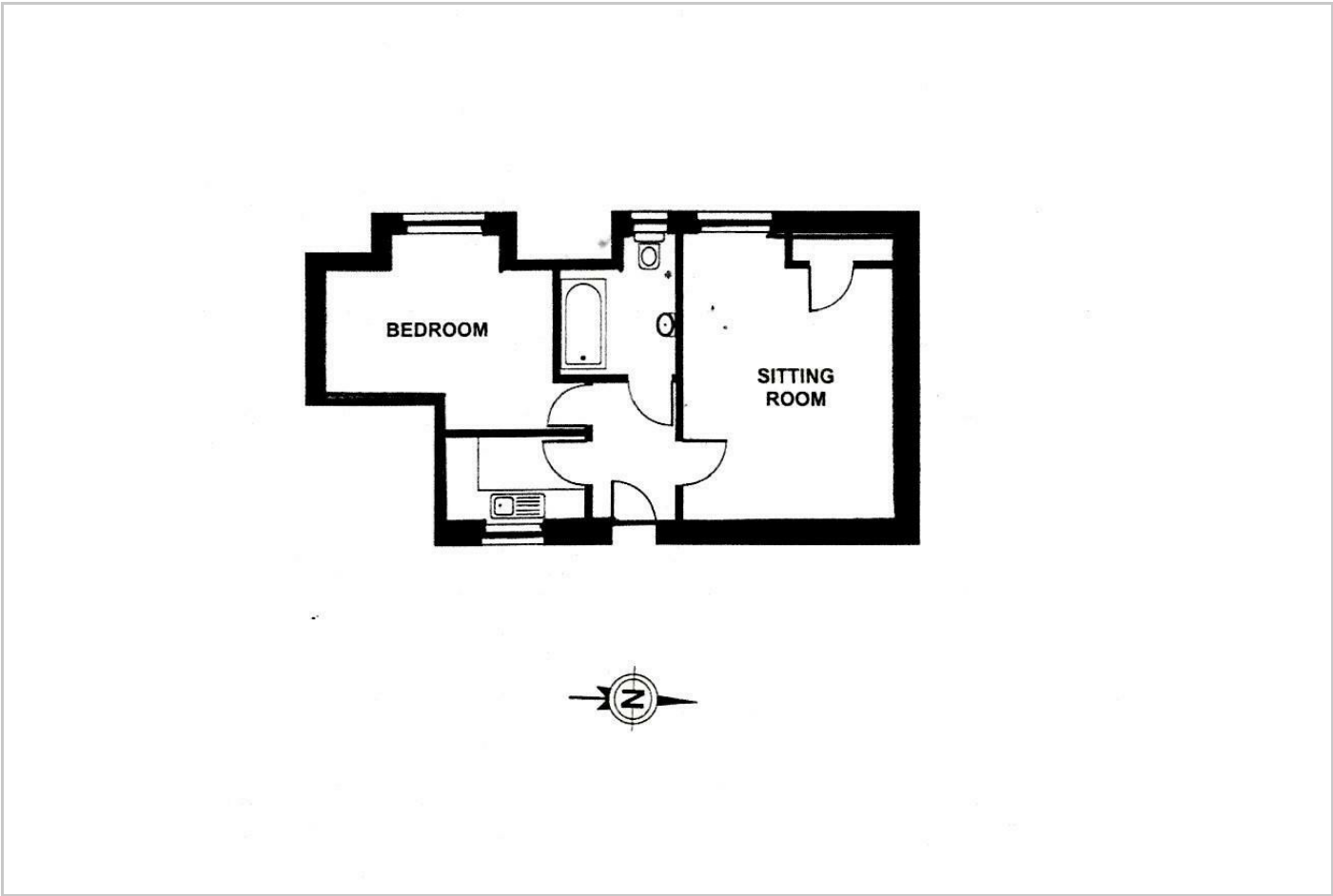
Service charge £5554 for the current year.



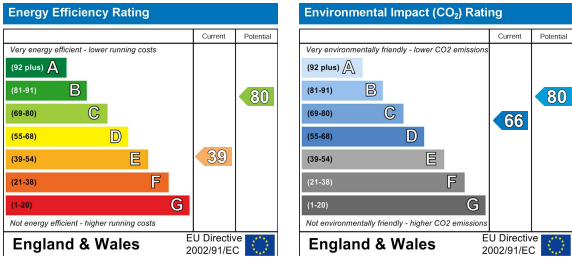
Area Map



Floor Plans



Energy Efficiency Graph



These particulars, whilst believed to be accurate are set out as a general outline only for guidance and do not constitute any part of an offer or contract. Intending purchasers should not rely on them as statements of representation of fact, but must satisfy themselves by inspection or otherwise as to their accuracy. No person in this firm's employment has the authority to make or give any representation or warranty in respect of the property.