

Millbank Court 24 John Islip Street , London, SW1P 4LG £550,000

A well presented, one double bedroom apartment set within a popular purpose built development close to the Tate Britain and River Thames. The property benefits from a 24 hour porter, lift, communal hot water and heating and a stunning communal rooftop terrace with 360 degree views across London.

The well appointed accommodation comprises a bright and spacious reception room, modern fitted kitchen, double bedroom with good storage and bathroom.

Millbank Court is located on John Islip Street which is a quiet backwater in the heart of Westminster. It is conveniently positioned for the shops, restaurants and local amenities of Marsham Street, Horseferry Road and nearby Victoria Street.

Share of Freehold

Viewing

Please contact us on if you wish to arrange a viewing appointment for this property or require further information.



1



1

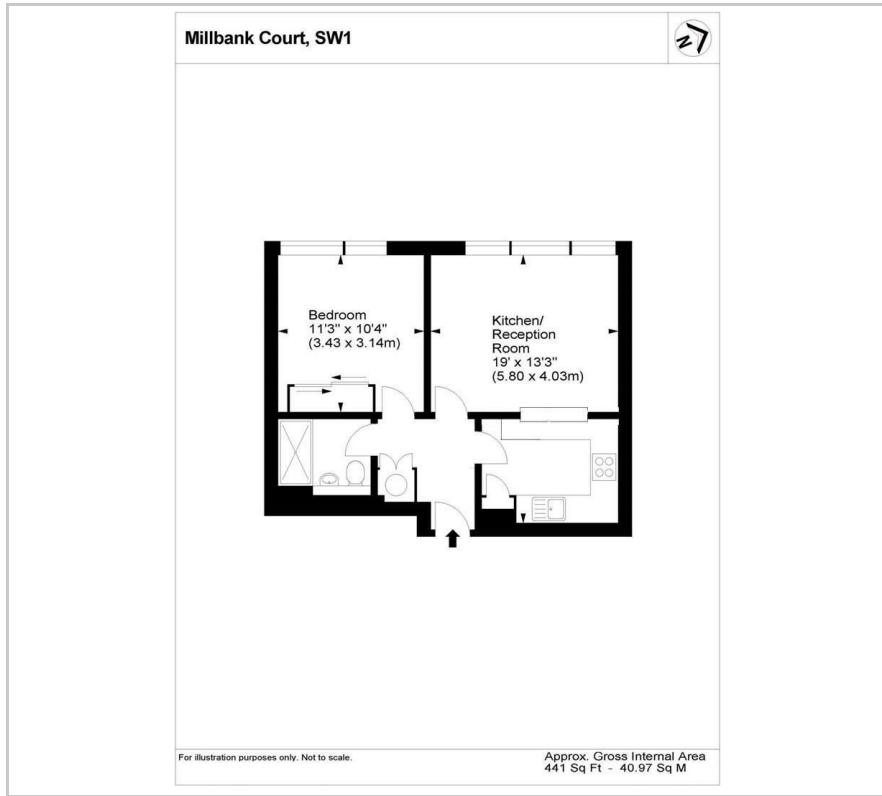


1



C

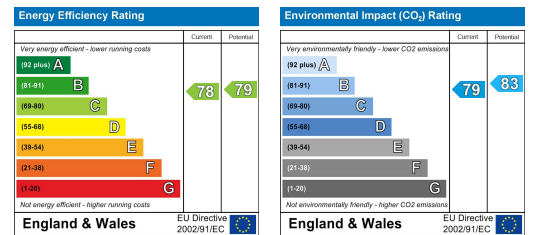
Floor Plan



Area Map



Energy Efficiency Graph



These particulars, whilst believed to be accurate are set out as a general outline only for guidance and do not constitute any part of an offer or contract. Intending purchasers should not rely on them as statements of representation of fact, but must satisfy themselves by inspection or otherwise as to their accuracy. No person in this firm's employment has the authority to make or give any representation or warranty in respect of the property.