



## 76B Ashley Gardens, Thirleby Road

, London, SW1P 1HG

£5,499



Welcome to this exquisite 3-bedroom, 2-bathroom apartment situated in the heart of Westminster, London. Spanning 1,466 sqft, this spacious property is perfect for those seeking a blend of comfort and style.

The apartment boasts modern appliances, elegant chandeliers, and comes fully furnished. Its well-designed floor plan includes a cozy living room, a fully equipped kitchen, and luxurious bathrooms.

Nestled in a beautiful period mansion building within the vibrant city, this apartment epitomizes urban living at its finest. Ashley Gardens, located in the prestigious SW1P area, is steeped in history. Built in the late 19th century, these red-brick mansion blocks were designed to offer spacious and elegant living accommodations. The development reflects the architectural grandeur of the Victorian era, with intricate detailing and stately facades.

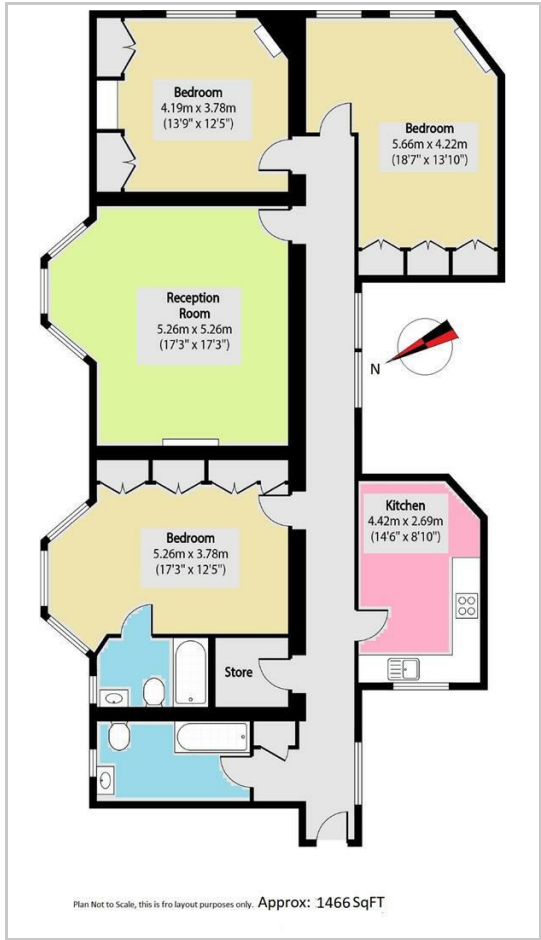




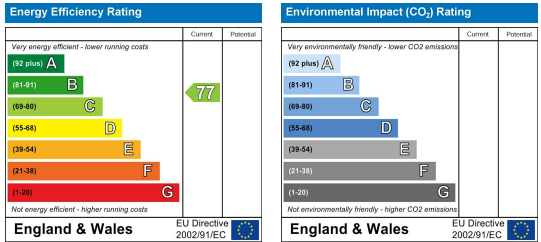
## Area Map



## Floor Plans



## Energy Efficiency Graph



These particulars, whilst believed to be accurate are set out as a general outline only for guidance and do not constitute any part of an offer or contract. Intending purchasers should not rely on them as statements of representation of fact, but must satisfy themselves by inspection or otherwise as to their accuracy. No person in this firm's employment has the authority to make or give any representation or warranty in respect of the property.