



## 79 St. Johns Building Marsham Street Westminster, London, SW1P 4SA

Bright two bedroom apartment in popular Westminster building. St John's, Marsham Street is located between Horseferry Road and Page Street in Central Westminster, overlooking St Johns Gardens which is a public London square garden. Iconic world renowned landmarks such as the Houses of Parliament and Westminster Abbey are nearby and further amenities such as the River Thames and St James Park are also convenient.

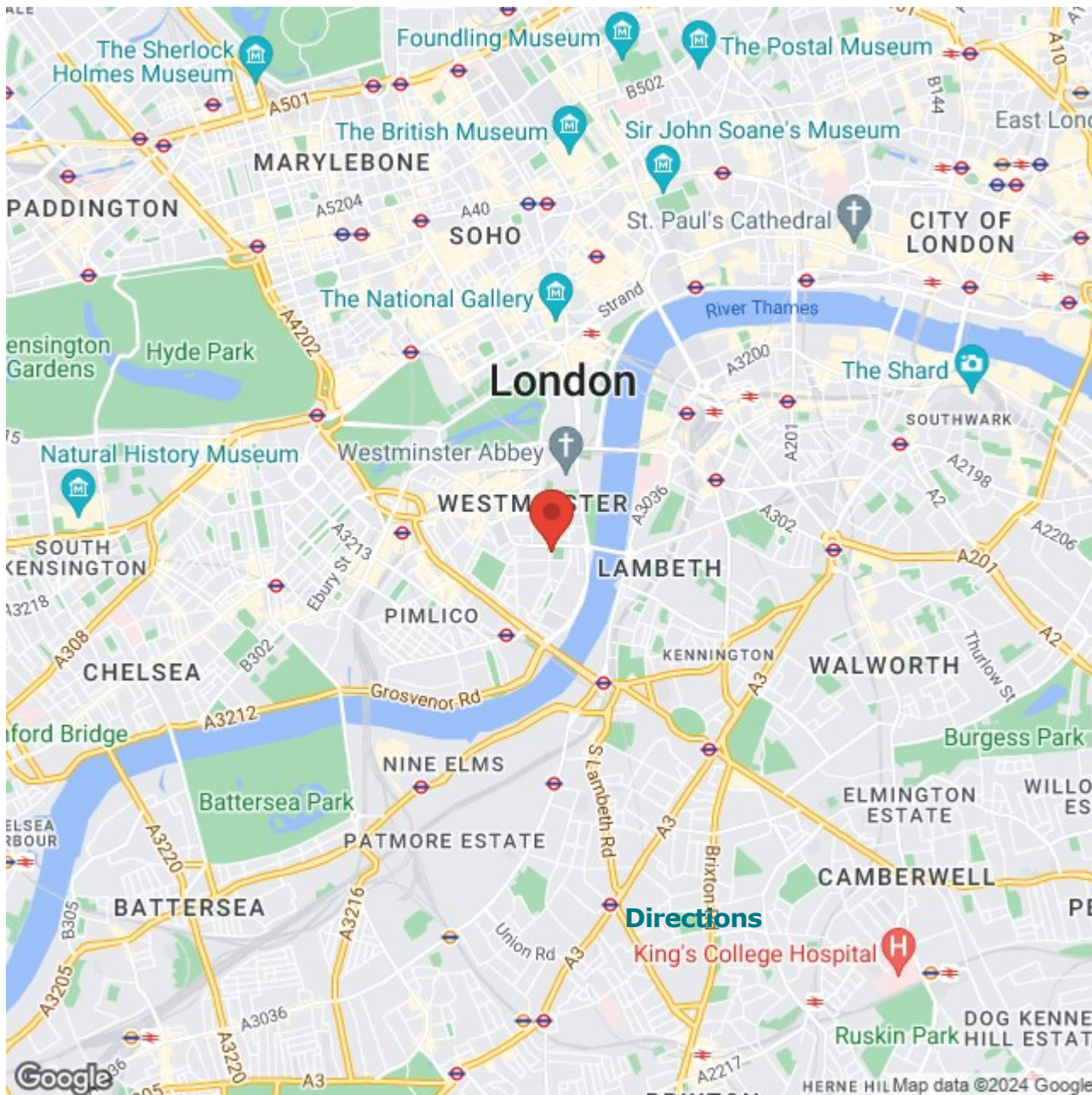
Westminster is superbly connected for transport, including Victoria Station with national Networks including the Gatwick Express and underground services from Victoria, St James Park, Westminster and Pimlico.

A superb two bedroom property (with a lift) on the fourth floor of this portered block. The property boasts a bright and spacious open plan reception room and dining room, Poggenpohl kitchen, principal bedroom, second bedroom, and a family bathroom. Services include 24hr concierge, business suite, residents gym and swimming pool.

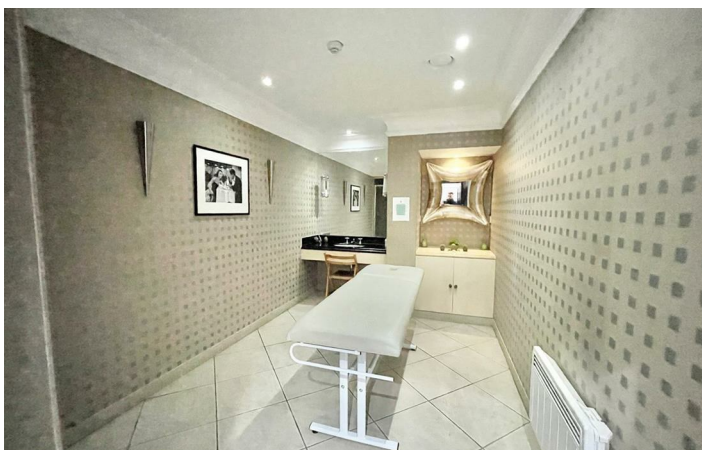
£1,375,000

# 79 St. Johns Building Marsham Street

Westminster, London, SW1P 4SA

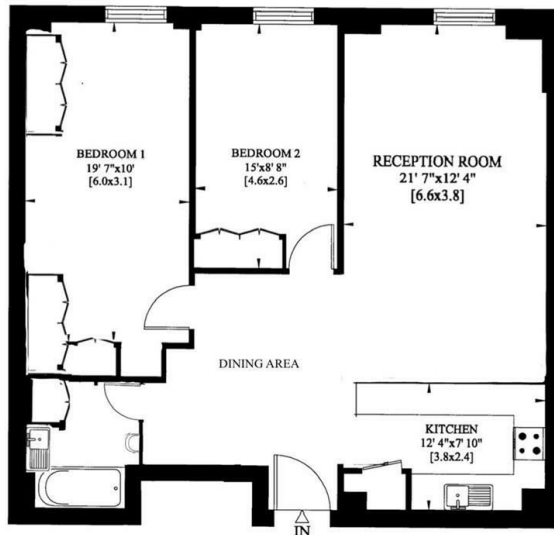


reception room



# Floor Plan

Gross Internal Area: 85 Sq. metres  
914 Sq. feet



FOURTH FLOOR

These particulars, whilst believed to be accurate are set out as a general outline only for guidance and do not constitute any part of an offer or contract. Intending purchasers should not rely on them as statements of representation of fact, but must satisfy themselves by inspection or otherwise as to their accuracy. No person in this firm's employment has the authority to make or give any representation or warranty in respect of the property.

