



z peabody Avenue pimlico, Westminster, SW1V 4BB £525 Per week

A fantastic one-bedroom flat on the 2nd floor (with lift) of this purpose-built residential development in Pimlico, SW1 is presented to the market.

The apartment has plenty of natural light and benefits from a recessed balcony as well as a lift. There is a well proportioned double bedroom with built in storage and a well-designed open plan living room and kitchen.

The bathroom has been finished to a high quality finish with fabulous walk in shower.

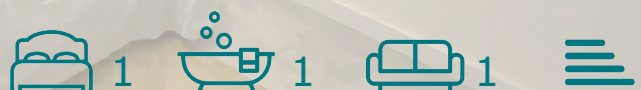
The apartment is well located being only 0.6 miles from both Pimlico underground and Victoria mainline station. Victoria mainline includes underground, overground and Gatwick Express making local, national and international travel extremely convenient.

It is also worth noting that Sloane Square station leading to the King's Road SW3 is also only a 12 min walk away and the 200 acres of Battersea Park 0.4 miles away.

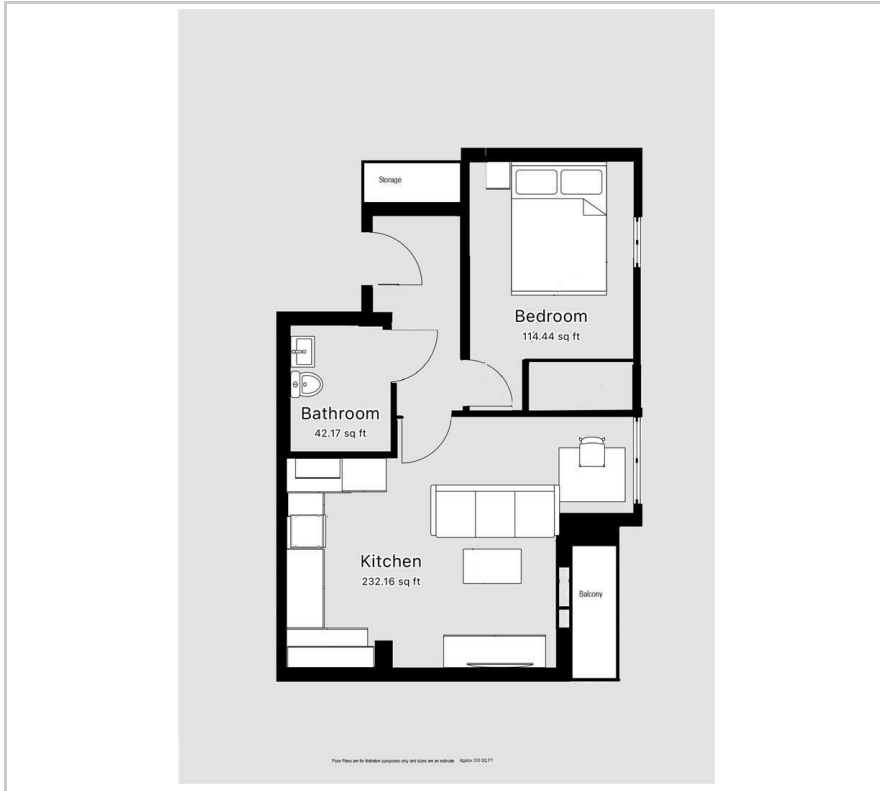
- Battersea power Station just across the river
- River view
- 10 Min walk to Sloane Square
- 8 Mins Victoria Coach and Train station
- Heating and Hot Water Included
- Balcony
- Open Plan
- Modern Apartment

Viewing

Please contact us on if you wish to arrange a viewing appointment for this property or require further information.



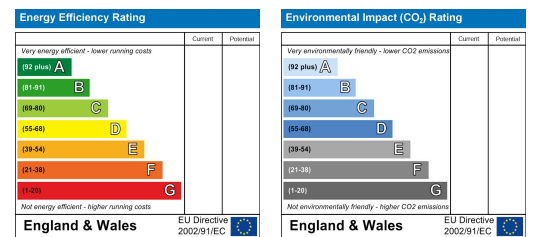
Floor Plan



Area Map



Energy Efficiency Graph



These particulars, whilst believed to be accurate are set out as a general outline only for guidance and do not constitute any part of an offer or contract. Intending purchasers should not rely on them as statements of representation of fact, but must satisfy themselves by inspection or otherwise as to their accuracy. No person in this firm's employment has the authority to make or give any representation or warranty in respect of the property.

15 Greycoat Place, Westminster, London, SW1P 1SB

t. e. james@jamesofwestminster.co.uk www.jamesofwestminster.co.uk