



47 Medway Street

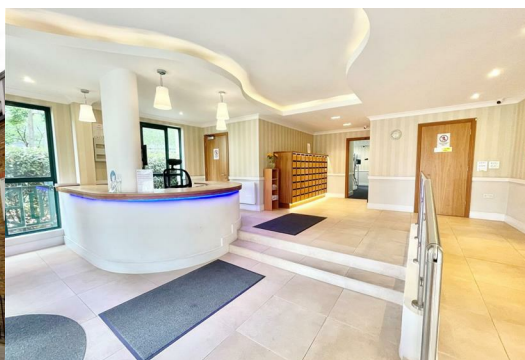
, London, SW1P 2TB

£575 Per week



This lovely one bedroom property which is situated within a ported building in the heart of Westminster. The property comprises of one doubled bedroom with a large living area, a good size kitchen. The property has two balconies. Heating and Water Hot is included within the rent as the system is communal.

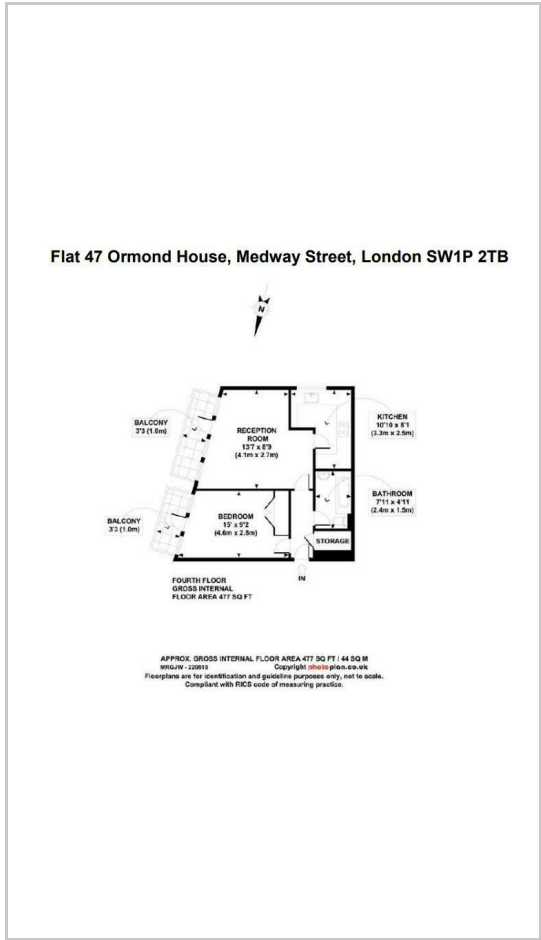
The property is in a great location, sit within 0.3 miles from St James Park Underground station Station (district and circle line) 0.7 miles Victoria station (national rail & circle district victoria) 0.5 Miles away from Pimlico station (Victoria line). Along with all the local shops and amenities the area has to offer and short walk away from Tate Britain and Westminster Abbey and the Houses Of Parliament.



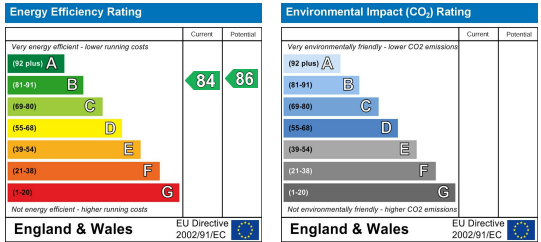
Area Map



Floor Plans



Energy Efficiency Graph



These particulars, whilst believed to be accurate are set out as a general outline only for guidance and do not constitute any part of an offer or contract. Intending purchasers should not rely on them as statements of representation of fact, but must satisfy themselves by inspection or otherwise as to their accuracy. No person in this firm's employment has the authority to make or give any representation or warranty in respect of the property.