



## 201 Howick Place

, London, SW1P 1WG

£600

A bright 1 double bedroom on the 2nd floor (with lift) of this sought after development in the heart of Westminster. Finished to a high standard this furnished apartment further comprises of an open plan reception room with an integrated kitchen, bathroom and bedroom. Howick Place is located only moments from the River Thames and Houses of Parliament and transport links are excellent with St James's Park, Westminster and Victoria, all being within walking distance. The surrounding area also offers a variety of retail stores, including the Nova building and Victoria Market food hall. as well as an abundance of amenities. EPC rating: C

### Viewing

Please contact us on if you wish to arrange a viewing appointment for this property or require further information.

- Modern Building
- Victoria Street bars and shops
- St James Park Station
- Victoria Station
- Westminster Station
- Open plan
- Balcony
- High finish
- Furnished
- Lift



1



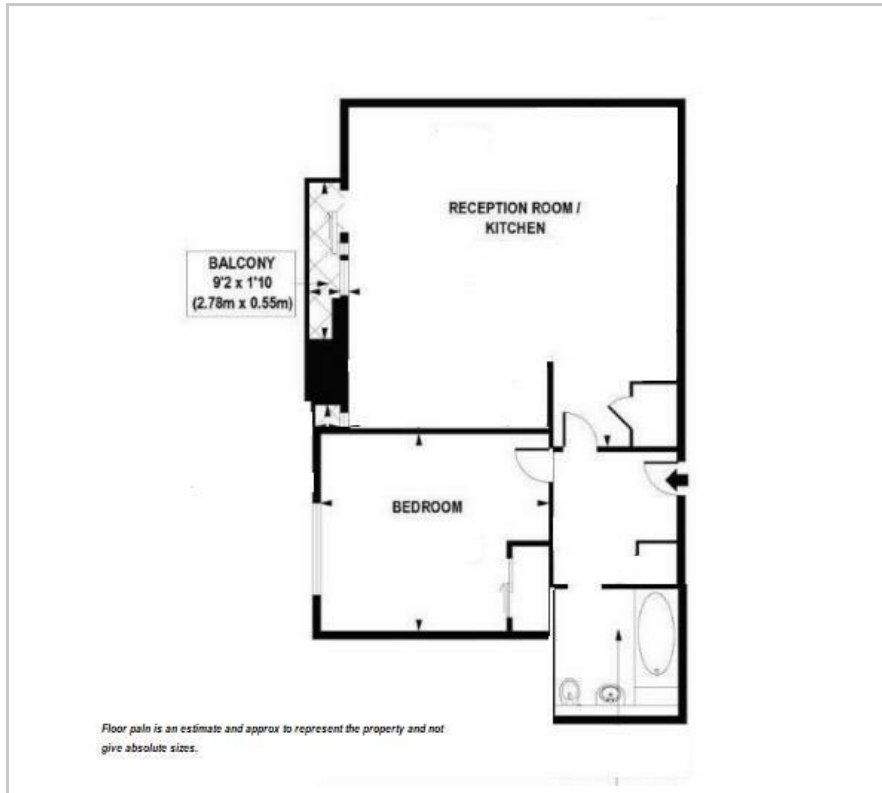
1



1



## Floor Plan



## Area Map



## Energy Efficiency Graph



These particulars, whilst believed to be accurate are set out as a general outline only for guidance and do not constitute any part of an offer or contract. Intending purchasers should not rely on them as statements of representation of fact, but must satisfy themselves by inspection or otherwise as to their accuracy. No person in this firm's employment has the authority to make or give any representation or warranty in respect of the property.

15 Greycoat Place, Westminster, London, SW1P 1SB

t. e. james@jamesofwestminster.co.uk www.jamesofwestminster.co.uk